

See the future
SIUI



CTS-8800 ^{Plus}

CTS-8800 ^{Plus}

NEW GENERATION OF B/W 4D
ULTRASOUND SOLUTION WITH
COMPACT DESIGN



See the future
SIUI

Shantou Institute of Ultrasonic Instruments Co., Ltd.

HEADQUARTERS:

Shantou Institute of Ultrasonic Instruments Co., Ltd.
Add: No.77, Jinsha Road, Shantou 515041 Guangdong, China
Tel: 86-754-8825 0150 Fax: 86-754-8825 1499
E-mail: siui@siui.com

HONG KONG OFFICE:

Shantou Institute of Ultrasonic Instruments (HK) Co., Ltd.
Add: Room 2101, Tung Chiu Commercial Center
193 Lockhart Road, Wanchai, Hong Kong
Tel: 852-2891 6722 Fax: 852-2891 6723

www.siui.com

CTS-8800^{Plus}

Upgraded on the new generation platform, CTS-8800Plus is empowered with 15-inch medical LCD, optional built-in lithium battery, enhanced B/W images and upgradable color Doppler package.



VERSATILE 4D CAPABILITY

The CTS-8800Plus offers excellent 4D imaging at an amazing price. Volumetric imaging technology covers obstetric 4D fetus imaging and gynecological transvaginal volumetric imaging, which show more accurate and specific images for different clinical demands.

SPATIAL COMPOUND IMAGING

The technology helps to ease echo artifacts and improve spatial resolution by scanning the target with multi-direction beamforming.

ADVANCED IMAGING TECHNOLOGY

Speckle reduction technology

The technology assists to reduce noise and artifacts, purify tissue shading and edging, improve contrast resolution and identification of early tissue/structure lesion.

Smart one key optimization

The system smartly adjusts TGC and B gain in B mode as well as base line, PRF and PW gain to acquire the best B/W image and PW image only by one-key press.

VALUE-ADDED CLINICAL SOLUTIONS

Panoramic imaging

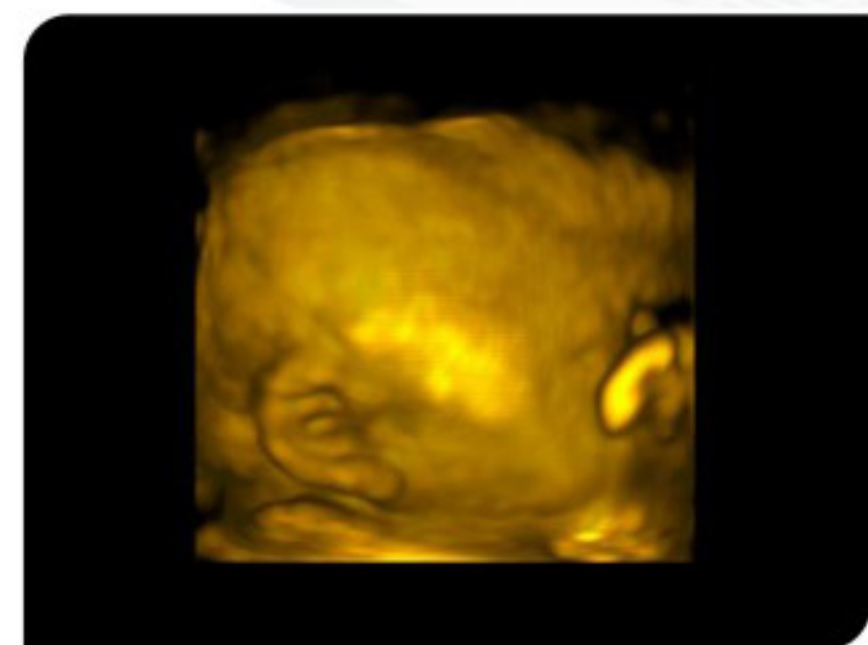
The system allows extending wider view for doctors to scan large area tissues with the movement of transducer scanning.

Wireless image transmission

The system offers mobile working in hospitals and clinics by displaying on-scan images via iPad, iPhone and wireless PC printer even if the doctor is away from the ultrasound system.

Color Doppler upgradeability

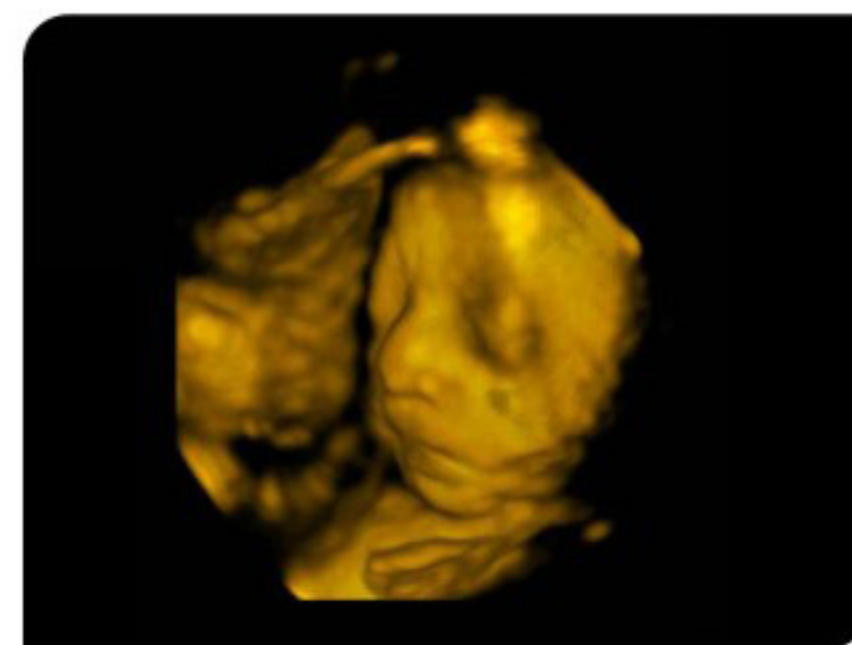
The system supports upgrades of color flow mapping, pulsed wave Doppler and triplex mode, which make itself a complete color Doppler ultrasound system ideal for users at the entry level.



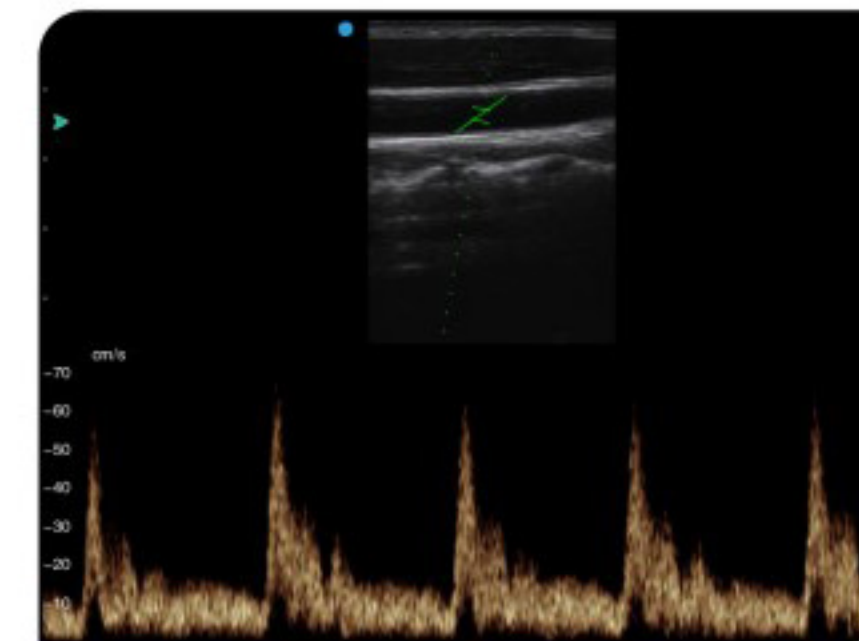
Fetal ear



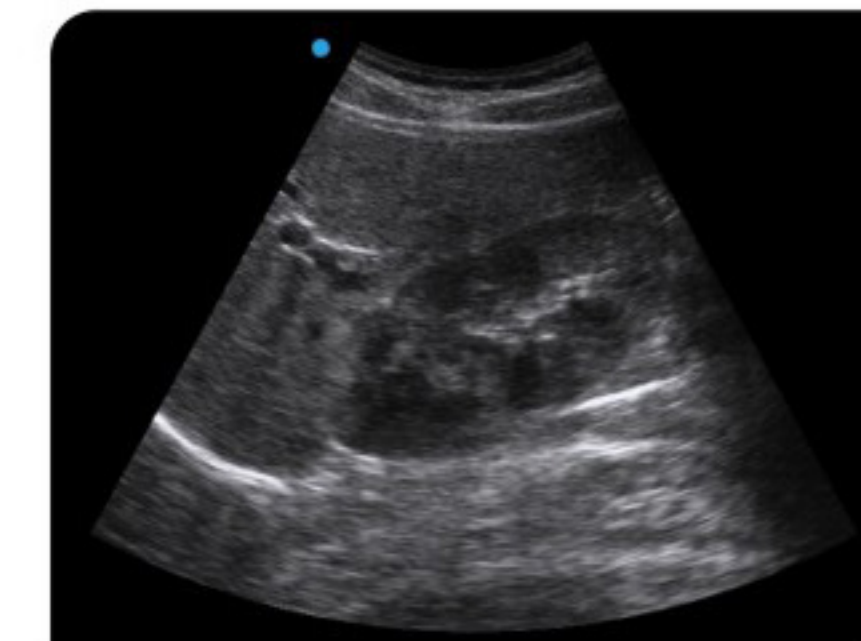
Fetal face



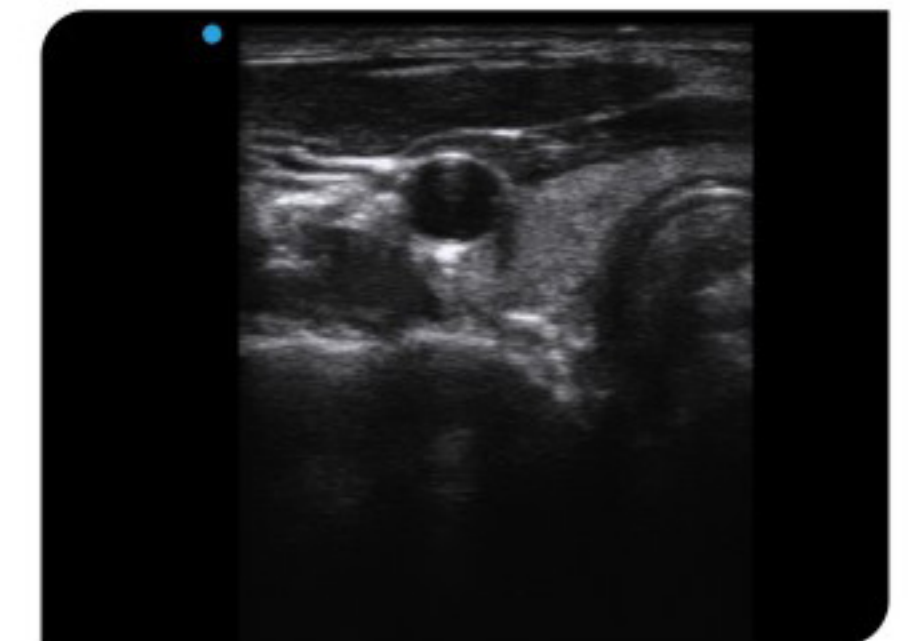
Fetal face



Carotid PW mode



Hepatorenal section



Thyroid